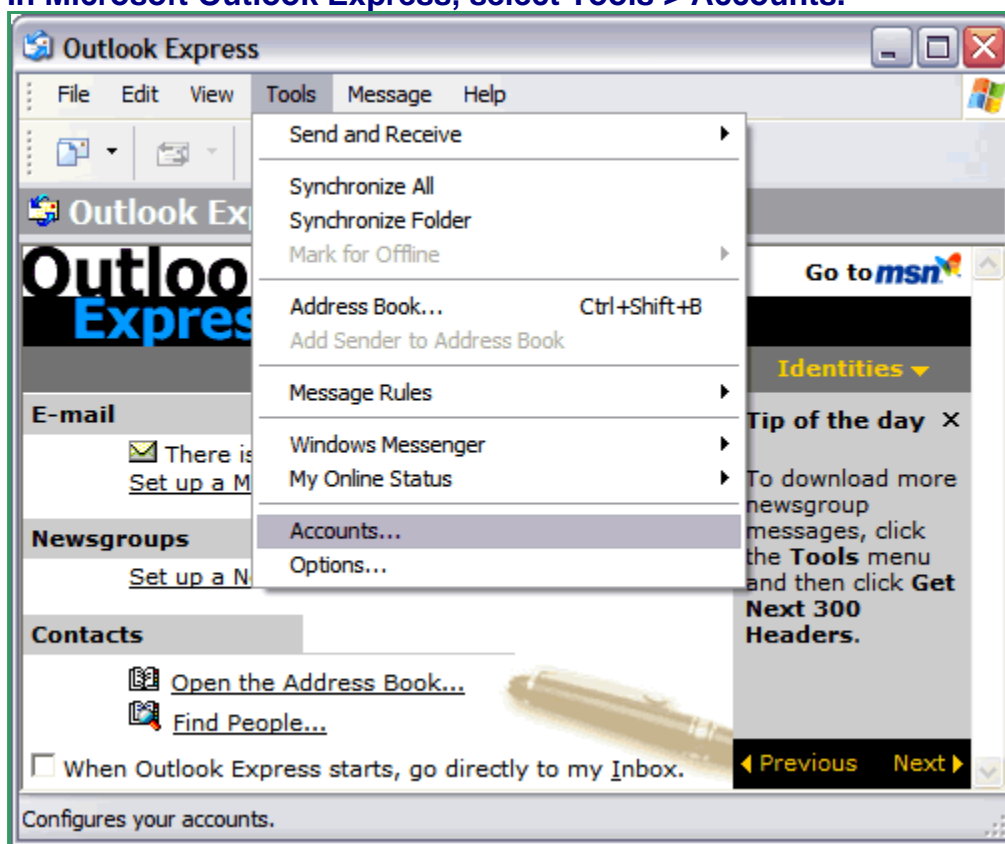


Setting Up Your E-mail in MS Outlook Express

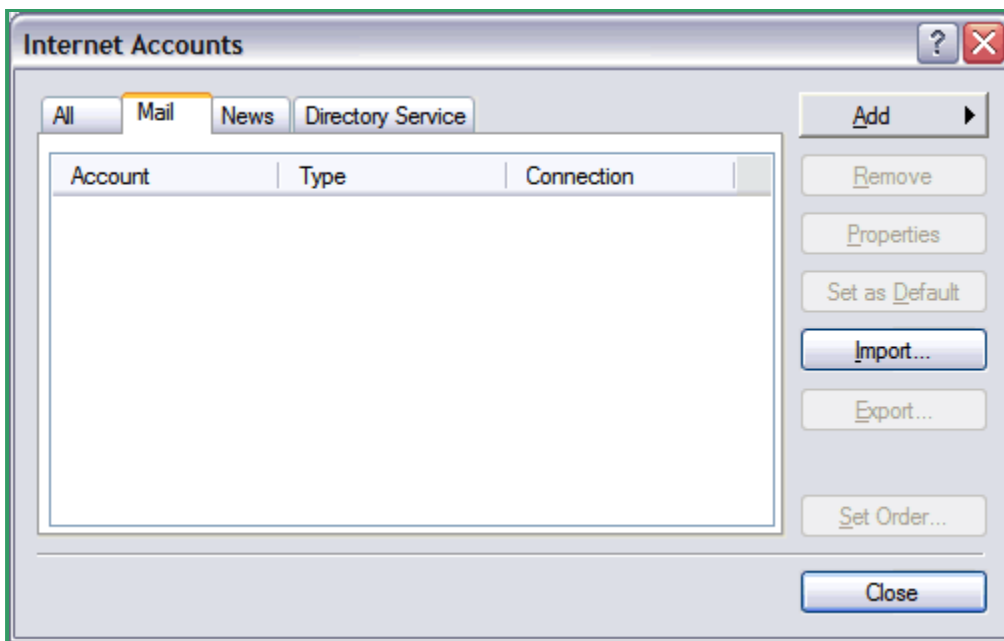
This tutorial shows you how to set up Microsoft Outlook Express to work with your e-mail account. This tutorial focuses on setting up Microsoft Outlook Express 6, but these settings are similar in other versions of Microsoft Outlook Express. You can set up previous versions of Microsoft Outlook Express by using the settings in this tutorial.

To Set Up Your E-mail Account in Microsoft Outlook Express

- In Microsoft Outlook Express, select Tools > Accounts.



- Select the "Mail" tab in the Internet Accounts window and click "Add."



- Enter your full name and click Next.



- Enter your e-mail address and click Next.

Internet Connection Wizard

Internet E-mail Address

Your e-mail address is the address other people use to send e-mail messages to you.

E-mail address:

For example: someone@microsoft.com

< Back Next > Cancel

- On the E-mail Server Names window, enter your information as follows:
- My incoming mail server is a
- POP3 server
- Incoming mail (POP3, IMAP or HTTP) server
- *mail.andwireless.net*
- Outgoing mail (SMTP) server
- *smtpout.secureserver.net*
- Click Next.

Internet Connection Wizard

E-mail Server Names

My incoming mail server is a server.

Incoming mail (POP3, IMAP or HTTP) server:

An SMTP server is the server that is used for your outgoing e-mail.

Outgoing mail (SMTP) server:

< Back Next > Cancel

- Enter your e-mail address for your account name and enter your password. Click Next.

Internet Connection Wizard

Internet Mail Logon

Type the account name and password your Internet service provider has given you.

Account name:

Password:

Remember password

If your Internet service provider requires you to use Secure Password Authentication (SPA) to access your mail account, select the 'Log On Using Secure Password Authentication (SPA)' check box.

Log on using Secure Password Authentication (SPA)

< Back Next > Cancel

Click Finish.

Internet Connection Wizard

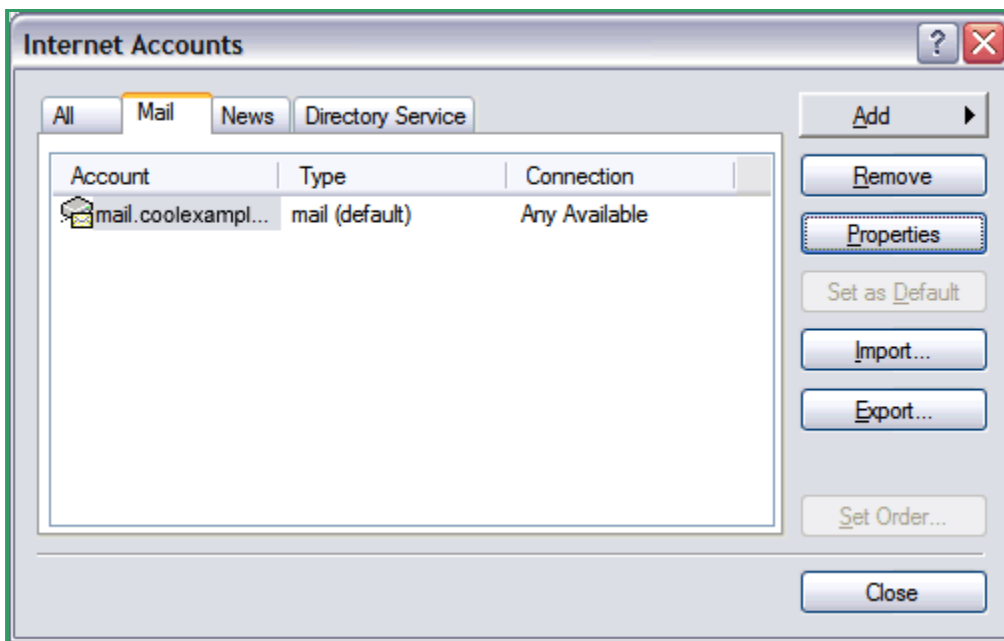
Congratulations

You have successfully entered all of the information required to set up your account.

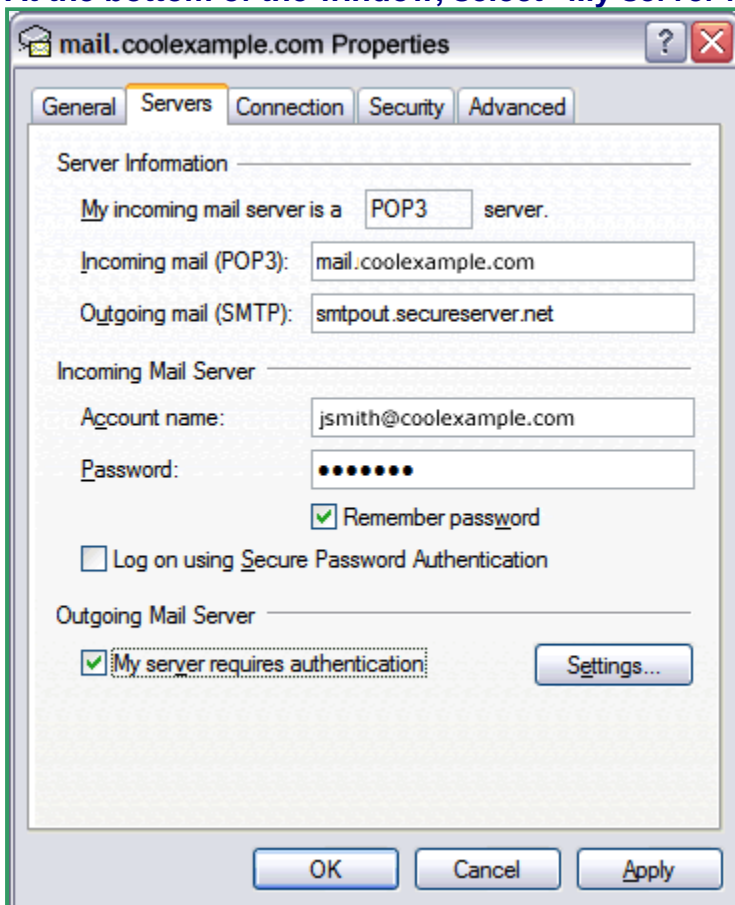
To save these settings, click Finish.

< Back Finish Cancel

Select the mail account you just created and click "Properties."



- In the Properties window, select the Servers tab.
- At the bottom of the window, select "My server requires authentication."



- Select the "Advanced" tab and change the "Outgoing mail (SMTP)" server port number to 80. Click OK.

